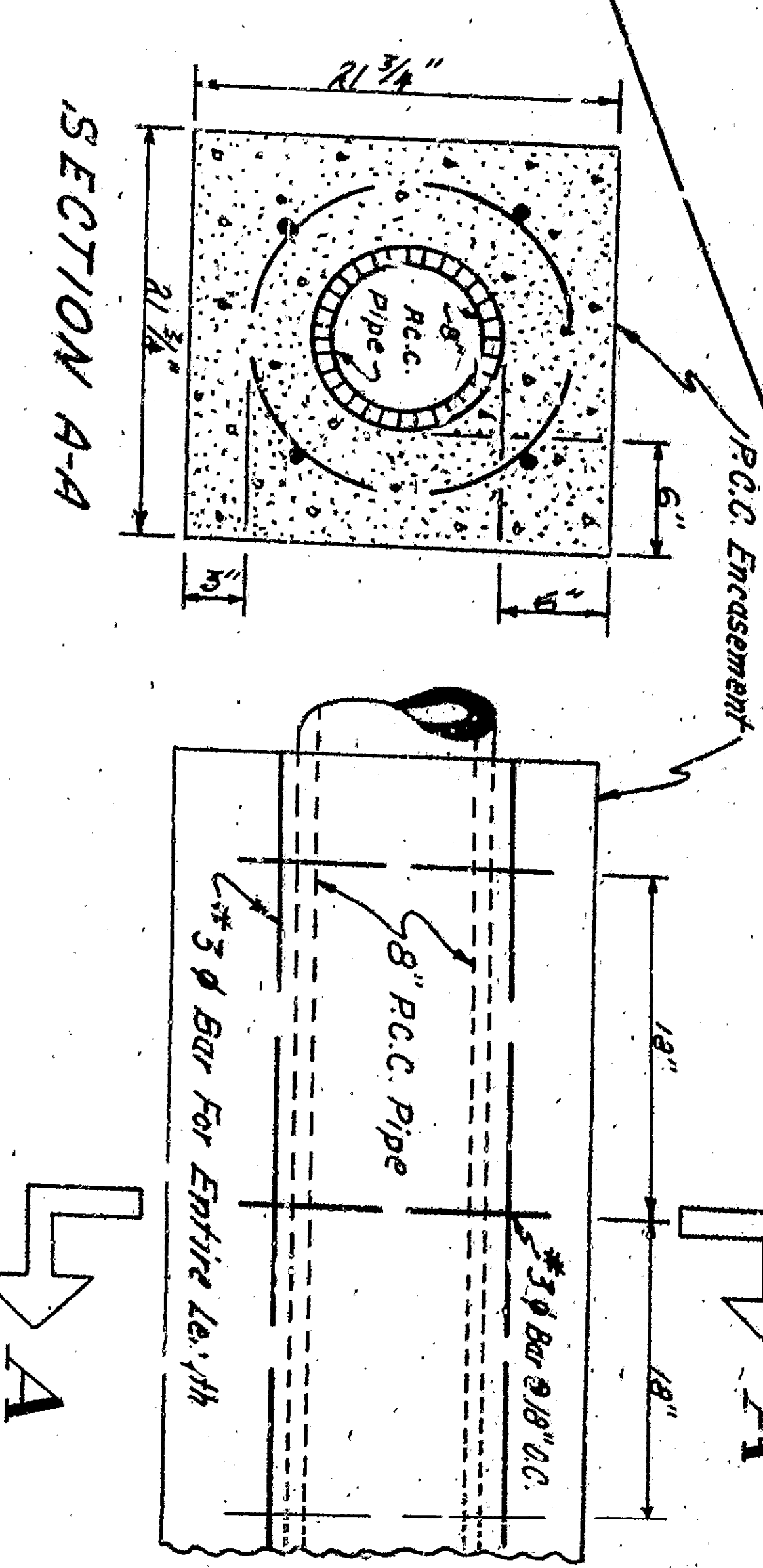
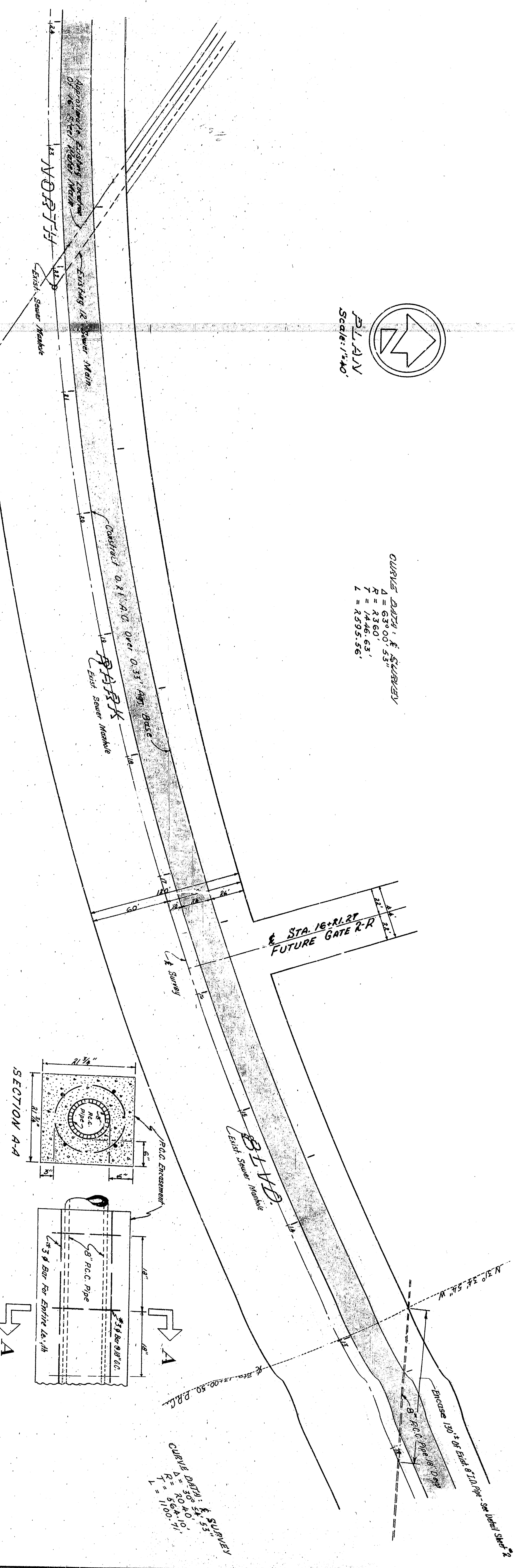


P.L. J.V.V.  
Scale: 1"=40'

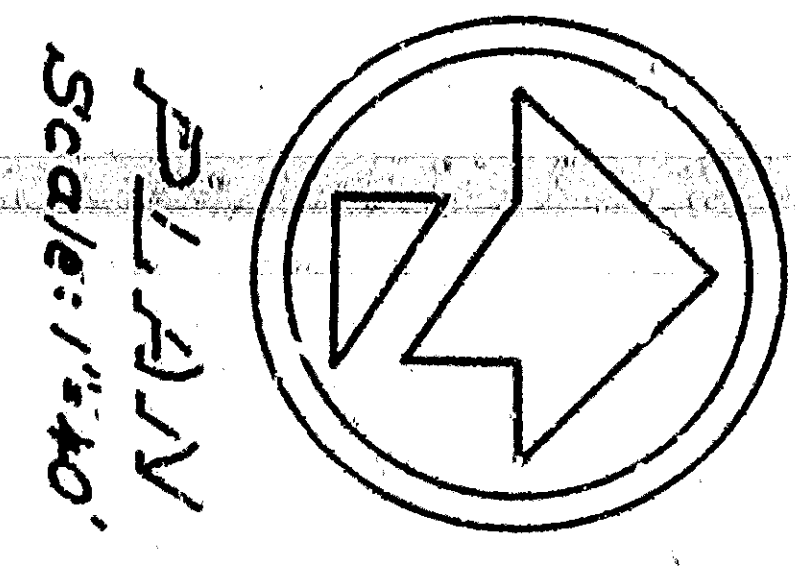
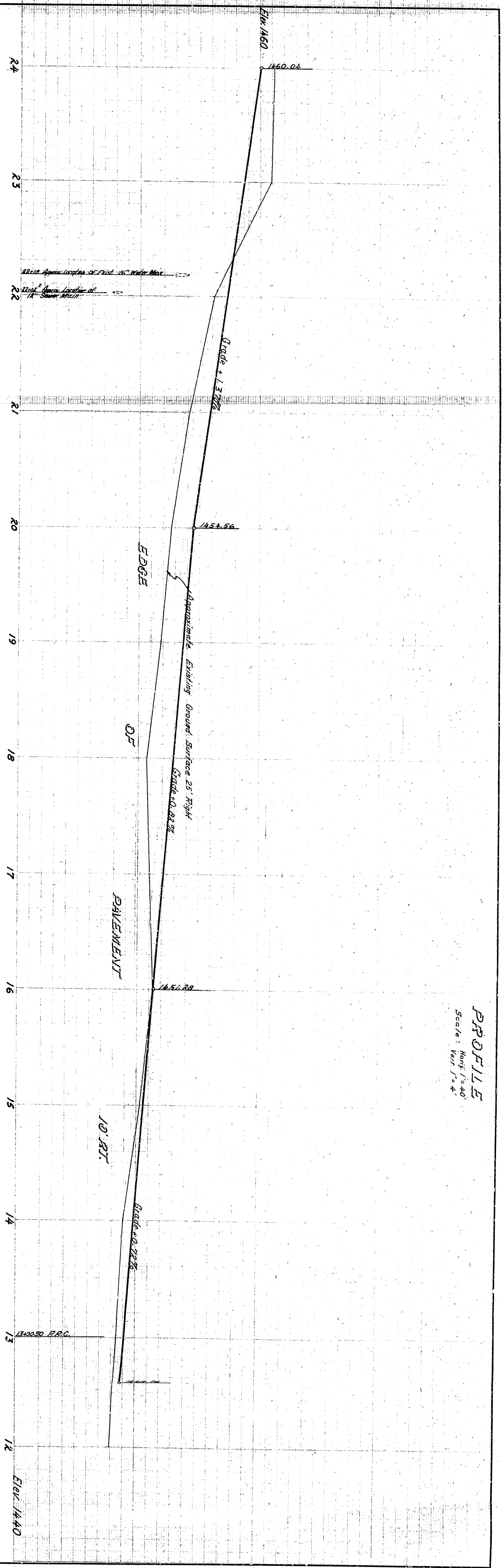
CURVES DATA: S. SURVEY  
 $\Delta = 63^{\circ}00'53"$   
 $R = 2360'$   
 $T = 1446.63'$   
 $L = 4395.56'$



P.C.C. ENCASUREMENT DETAIL  
 No. 50/50

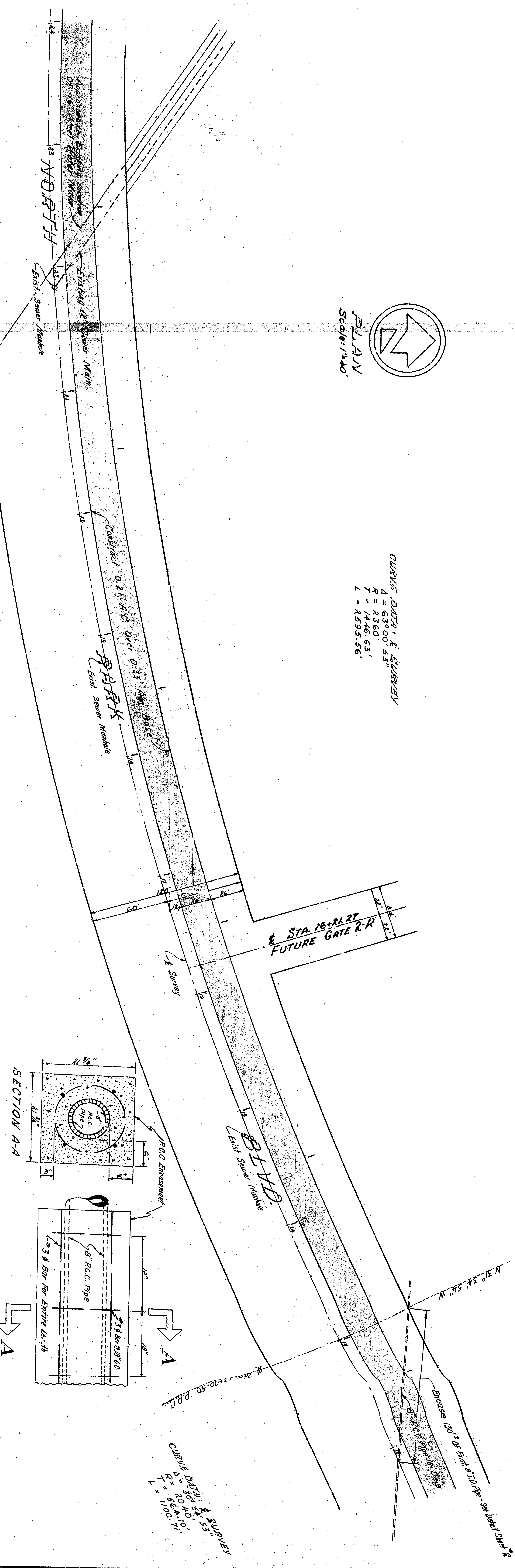
APPROVED	3-2	1942
REGISTERED CIVIL ENGINEER NO. 14653		
DRAWING NO. (ISSUED BY ARCHT)	3169	CHECKED BY DAVID
SHEET 2 OF RECOMMENDED 7 SHEETS		

DEPARTMENT OF ENGINEERING  
 CITY OF SAN BERNARDINO  
 IMPROVEMENT PLANS  
 NORTH PARK BLVD. FROM WESTERN AVENUE  
 TO PEZMOUNT DRIVE



P.L.A.V.  
Scale: 1"=40'

CURVES DATA: S. SURVEY  
 $\Delta = 63^{\circ}00'53"$   
 $R = 2360'$   
 $T = 1446.63'$   
 $L = 4393.56'$



APPROVED	1942
CITY ENGINEER	JAMES
DRAWING NO.	3169
CHECKED BY	DAVID
SHEET	2 OF 7
RECOMMENDED	YES

DEPARTMENT OF ENGINEERING  
 CITY OF SAN BERNARDINO  
 IMPROVEMENT PLANS  
 NORTH PARK BLVD. FROM WESTERN AVENUE  
 TO PEACEMOUNT DRIVE